



AVR Connect Next-level planting & harvesting



**KEEN &
GREEN**

AVR Connect

Measure to manage: cost-effective cultivation

An online reporting tool for your machine activities, and in the next level an online collection system for all your machine data, both on and off the field.

AVR Connect offers you more data and consequently a more effective use of your machine and resources.

- Applying precision farming techniques makes your work more efficient, leading to lower costs.
- Statistics provide insight into improvement opportunities.
- Easy access using your e-mail address and password.
- Personal, safe and user-friendly platform.

■ How does it work?

AVR harvesters and planting machines can be connected to the internet, which allows for machine data to be transmitted to AVR Connect. This allows you to keep easily and automatically track of what is happening in the field in your FMIS. This way, your planting and harvesting activities can be aligned even better.

- The machines are equipped with technical sensors.
- As far as the planting machine is concerned, tractor data (if available) such as consumption can be collected via the ISOBUS connection.
- The pre-installed unit (with SIM card) collects sensor data and transmits it wirelessly and in real time via the internet to your AVR Connect platform.
- The platform visualizes the data in a comprehensible way.
- It is not only possible to monitor certain functions remotely, but also to install software updates remotely.





■ **Option: Integrated yield measurement**

As an extension to the AVR Connect platform, weighing cells can be mounted on the Puma's picking-off table. The data from these cells is also forwarded to your personal platform via the internet. The result is clearly displayed by means of graphics.

■ **Precision farming is the future**

Due to increases in scale in the agriculture sector and a number of external factors, it is becoming increasingly important to digitize all available data and further develop precision farming applications (the right dosing quantity at the right moment and in the right place). This is precisely why we continue to invest in it. Existing modules will be expanded further and new options will be added. We are also working hard to further implement AVR Connect across the entire AVR product portfolio.

Work more efficiently by analyzing machine and field data

■ Combine available data and work more efficiently by linking with third party software

For field creation: Synchronize with JD Link for seamlessly importing known fields.

And vice versa:

Thanks to AVR Connect's ability to link with external data platforms such as WatchItGrow and Dacom, information like planting and harvesting time data and yield data can easily be integrated into these platforms. This information can then be linked to, for example, available satellite data and data concerning fertilization, irrigation and spraying of relevant parcels.

■ Advantages of connecting to external platforms (WatchItGrow/Dacom)

- **Automatic completion of parcel sheet** (e.g. registration of harvesting time (including hours), fuel consumption, machine used and yield totals).
- Cultivation registration can be used for **reporting, permissions checks, or calculating balances**.
- User-friendly, **offers insight (reporting and costs)** and visualizes the differences within the parcel.



Field management



Remote overview & history



Integrated yield measurement



Remote diagnosis,
minimize service interventions



Realtime position & route
(inside & outside field)



Remote alarms,
minimize machine downtime



Follow up key parameters



Data exchange



Remote (software)update



Register waiting times to
optimize them



Geofencing



Optimize maintenance planning



FIELDS



Select a season

1-1-2019 - 31-12-2019 ▾

Select a field

▾

➕ Add field

✎ Edit field

Sync John Deere

FIELD INFO

Size: 3.59 hectare

Variety: -

Is cut: -

Caliber: -

Seeded potato: -

FIELD CYCLES

Start
13/10/2019 - 13:44

End
13/10/2019 - 18:56

Type: Harvesting Machine:

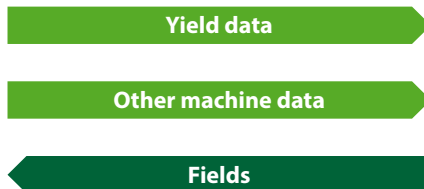


Finished		Expected	
Bruto	Net	Bruto	Net
44.11	44.11 tons/hectare	-	- tons/hectare
153.31	153.31 tons/field	5.26	5.26 tons/field

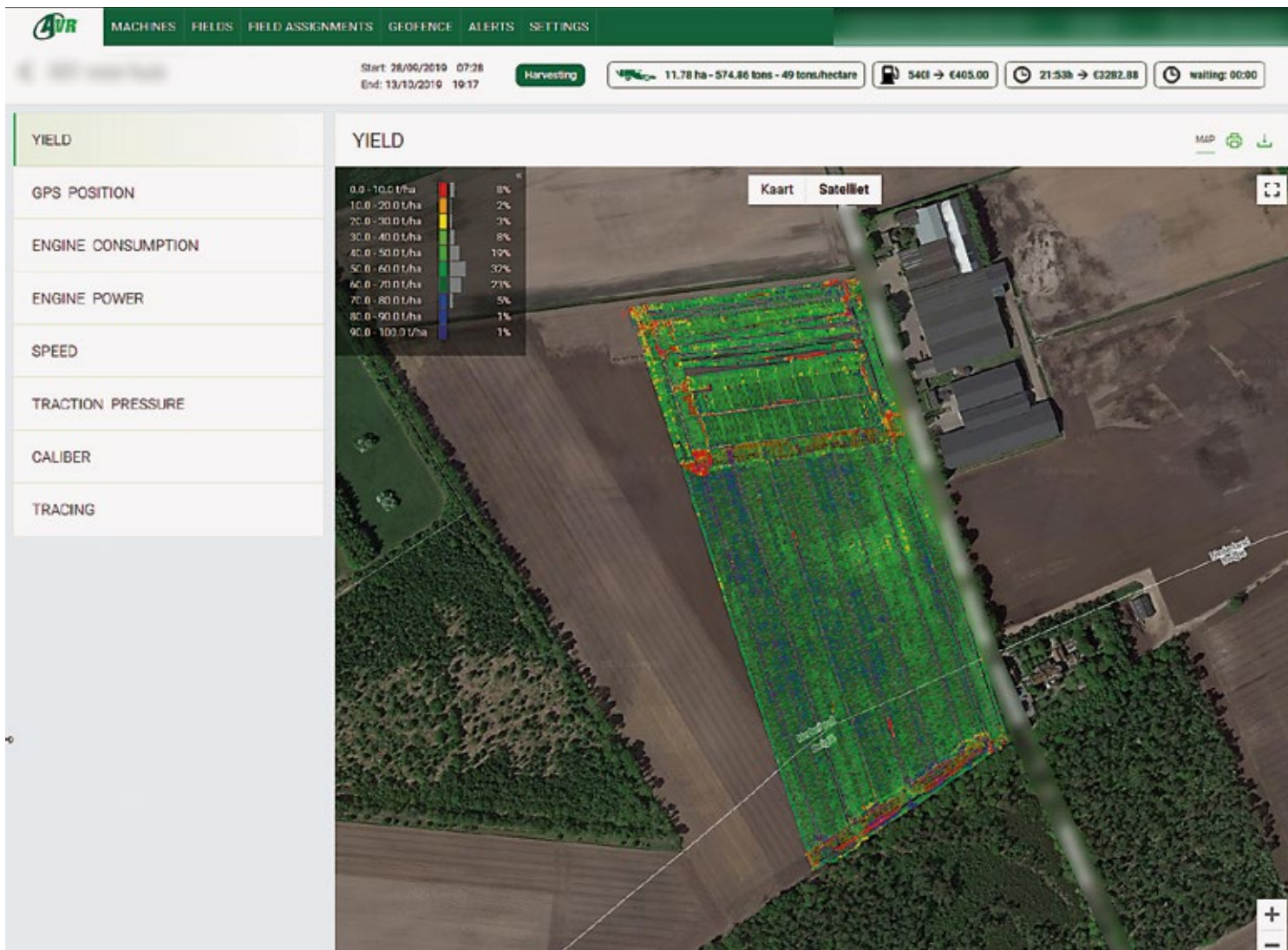


Stay ahead and limit your cultivation costs

Thanks to the analyses offered by AVR Connect, you can stay ahead in your sector and limit your cultivation costs.



Farm Management Information Systems





DACOM SOUWPLAN 2020 Apps Ondersteuning Meldingen 60

Zoek datasets 30 resultaten gevonden

- satelliet** Apr 22, 2020
2 gewasperceles, 2 metingen
- satelliet** Jun 1, 2020
2 gewasperceles, 2 metingen
- satelliet** Apr 25, 2020
2 gewasperceles, 2 metingen
- satelliet** May 30, 2020
3 gewasperceles, 2 metingen
- satelliet** Sep 28, 2019
3 gewasperceles, 2 metingen
- yield (ton/ha)**
workwidth (m)
Tussen 1 meting(en) minder
- satelliet** May 28, 2020
- satelliet** Apr 30, 2020
- hoogtekaart** Jan 1, 2007
4 gewasperceles, 1 meting
- hoogtekaart** Jan 1, 1998
4 gewasperceles, 1 meting

Per Datum

yield (ton/ha)
September 28, 2019 5:19 AM

57,35 - 71,04	7118
43,67 - 57,35	7048
29,99 - 43,67	6245
16,30 - 29,99	1411
2,62 - 16,30	1044

Our KEEN & GREEN quality label indicates that our machines are equipped with techniques that promote durability and ease of use.

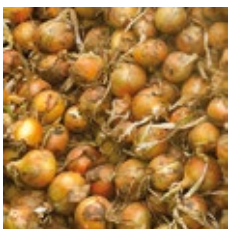


■ **KEEN**

AVR never stops innovating and designs smart machines that make your work life easier and allow you to maximize your profits.

■ **GREEN**

Our machines are not only called green because of their striking color, but also because of their durability. The machines consume as little fuel as possible, and their solid construction ensures a very long lifespan. This means you will have recovered the costs of your investment in no time.



AVR bv, with head office in Roeselare, Belgium, produces a comprehensive selection of sophisticated machines for the potato industry (and other bulbous and tuberous plants). This includes planting bed preparation, planting, ridging, haulming, harvesting and hangar storage. Our mission is to make sure that more marketable products end up in the hangar using less input. So as to be able to offer you optimal support, we invest for instance in an extensive dealer network and a strong service department. AVR employs about 180 employees internationally, has a network of more than 100 dealers and had a turnover of 61 million euros in 2019.



www.avr.be

Ask for more information, we'll be happy to help you:

AVR bv | Meensesteenweg 545 | 8800 Roeselare, Belgium
T +32 51 24 55 66 | F +32 51 22 95 61 | info@avr.be
www.avr.be

Stay up-to-date:

